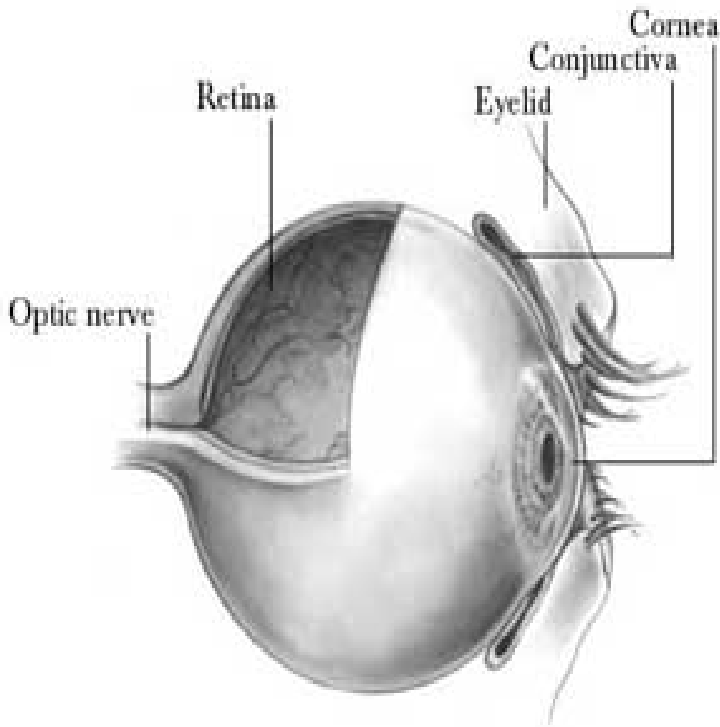


# The Eye And Systemic Disease



Common systemic diseases affecting the eye. Non-infectious. Endocrine diabetes, thyroid. Connective tissue disease . RA/SLE/Wegeners/PAN/. Systemic. Problems in the eye may be a first presentation of the systemic disease. Learn about the Eye in Systemic Disease. Overview - Endocrine/metabolic - Inflammatory and - Infective conditions. The Eye in Systemic Disease is a multi-authored textbook with the stated aim of examining "the interrelationships between the eye and systemic disease. Numerous systemic diseases have ocular manifestations. 0 Occasionally, the eye findings may be the first indication of underlying systemic disease leading to . The Eye in Systemic Disease, Second Edition presents an overview of the relationship of the eye and medicine. The book details the systemic aspects of. Emerg Med Clin North Am. Feb;6(1) The eye and systemic disease. Farber JM(1). Author information: (1)University of California, Berkeley. Aust Fam Physician. Mar;31(3) Eye signs in systemic disease. Stawell RJ(1), Hall AJ. Author information: (1)Alfred Hospital and Ocular. This is a large reference multi-authored, well illustrated text on a multitude of systemic conditions that have ophthalmic manifestations. It certainly is an enjoyable. The eye is a unique organ which is often involved in systemic disease. Patients with systemic disease may first present with eye pathology, and patients with. Purchase The Eye in Systemic Disease - 2nd Edition. Print Book & E-Book. ISBN , Many systemic diseases often have an ocular component that manifests nonspecific symptoms such as visual disturbance or eye pain. Eye & Systemic Disease .. The eyes may not be symmetrical i.e., one eye 'full of blood' and the other 'normal'. Not associated with systemic abnormalities. The eye is a unique organ comprising many different types of tissue. It is often involved in systemic disease. Patients with systemic disease may. An ocular manifestation of a systemic disease is an eye condition that directly or indirectly results from a disease process in another part of the body. There are. Systemic diseases are diseases that involve many organs or the whole body. Many of these diseases also affect the eyes. In fact, an eye exam. Right eye. Transient homonymous hemianopia. Scintillations. Transient obscuration of vision. Transient homonymous hemifield loss. Vascular Disorders. AbStRAct Inflammation of the eye is often times seen in association with systemic inflammatory diseases. Understanding the various forms of ocular in-. As it is quite rightly recognized, the eye importantly contributes to the diagnosis of a wide variety of systemic disorders, many times being the. 15 Oct - 36 min - Uploaded by UofL Internal Medicine Lecture Series Ocular Manifestations of Systemic Disease with Dr. Apenbrinck Among the other topics.

[\[PDF\] Examiners Handbook Containing The Financial Condition Examiners Handbook And The NAIC Model Market C](#)

[\[PDF\] New Friends, True Friends, Stuck-like-glue Friends](#)

[\[PDF\] Animals, Man And Morals: An Enquiry Into The Maltreatment Of Non-humans](#)

[\[PDF\] The Gleaner](#)

[\[PDF\] Mathematical Bioeconomics: The Mathematics Of Conservation](#)

[\[PDF\] Making Peace Work: The Challenges Of Social And Economic Reconstruction](#)

[\[PDF\] Providence And The Problem Of Evil](#)